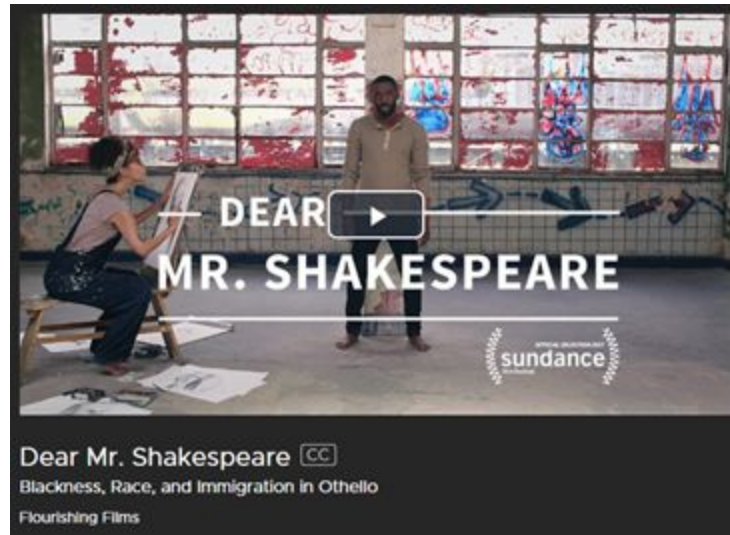




## Modification Example:

1. Show brief video

Dear Mr. Shakespeare  
Directed by Shola Amoo



2. Brainstorm
  - a. Types of Resources (examples): History of Elizabethan era, Information about specific performances and actors, Othello text, YouTube videos, Psychology articles, History of blackface, Current race relations
  - b. Keywords/Phrases (examples): Shakespeare, Othello, race, specific actors mentioned (Paul Robeson, Ira Aldridge, James Earl Jones, Nicholas Burt, Edwin Forrest, Edmund Kean), blackface, Elizabethan era, Elizabeth I, Tudor England, acting, actors, prejudice, racism, theatre, performance

## Bibliography:

- Holmes, J.D. (2016). Myth: Students learn better when teaching methods are matched with their learning styles. In *Great Myths of Education and Learning* (pp. 11-24). Hoboken, NJ: Wiley.
- Krätzig, G. P. & Arbuthnott, K. D. (2006). Perceptual learning style and learning proficiency: A test of the hypothesis. *Journal of Educational Psychology*, 98, 238–246.
- Tight, D. G. (2010). Perceptual learning style matching and L2 vocabulary acquisition. *Language Learning*, 60, 792–833.